



INSTALLATION INSTRUCTIONS

REAR WHEEL WELL INNER LINER FORD F-150

MODELS 2004 - 2005

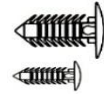
List of Contents:

Qty:

1 Pc. Rear Wheel Well Inner Liner, Passenger Side
 1 Pc. Rear Wheel Well Inner Liner, Driver Side



1 Pc. Installation Kit
 * 2 pc. Plastic Push Pin (Large)
 * 4 pc. Plastic Push Pin (Small)
 * Installation Instructions.



Required Tools:

*Ratchet with socket of 10 mm
 *Utility Knife
 *Electric drill with 1/4" drill bit
 *Easy Removal Tool



Preparations:

*Remove the tires for easy installation
 *Clean the interior panels of the rear Wheel house

Technical Support phone line:

1-800-433-3604

Instructions:

Installation time estimated: 30 min.

1. PLEASE READ INSTRUCTIONS CAREFULLY BEFORE STARTING THE INSTALLATION.

NOTE: One person installation.

Starting on the Driver's Side:

2. Locate the top support bracket and remove the interior bolt using the wrench with 10mm socket (see fig A & B).

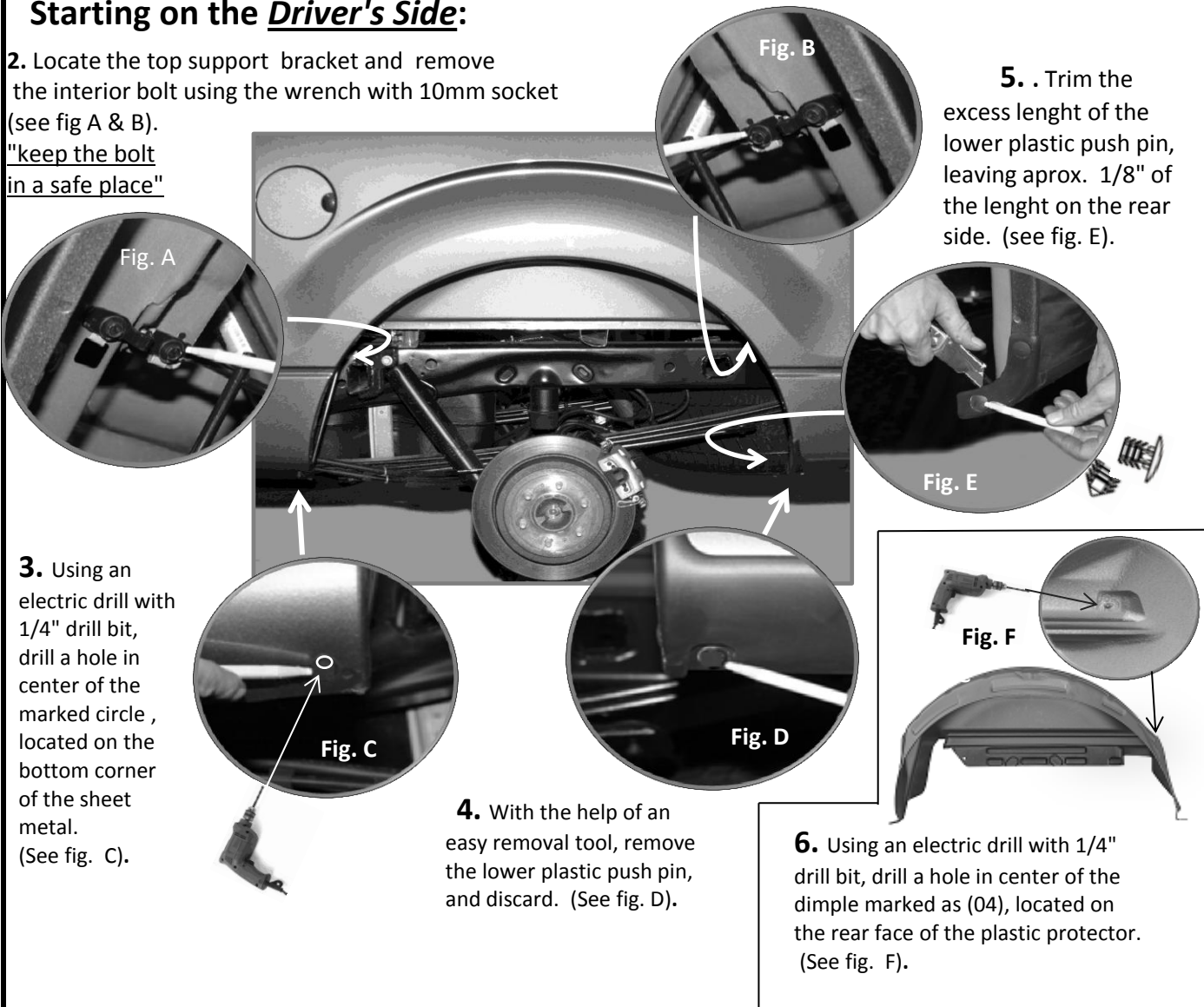
"keep the bolt in a safe place"

3. Using an electric drill with 1/4" drill bit, drill a hole in center of the marked circle, located on the bottom corner of the sheet metal. (See fig. C).

4. With the help of an easy removal tool, remove the lower plastic push pin, and discard. (See fig. D).

5. Trim the excess length of the lower plastic push pin, leaving approx. 1/8" of the length on the rear side. (see fig. E).

6. Using an electric drill with 1/4" drill bit, drill a hole in center of the dimple marked as (04), located on the rear face of the plastic protector. (See fig. F).

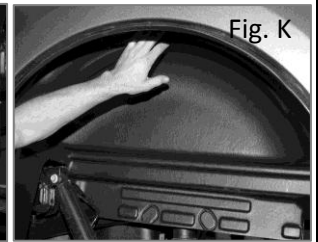
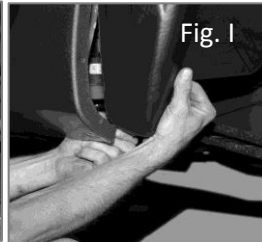
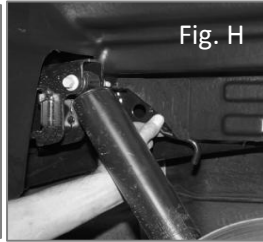
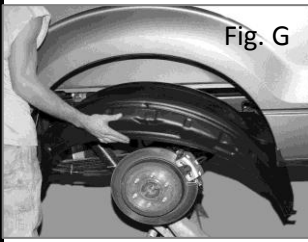




INSTALLATION INSTRUCTIONS

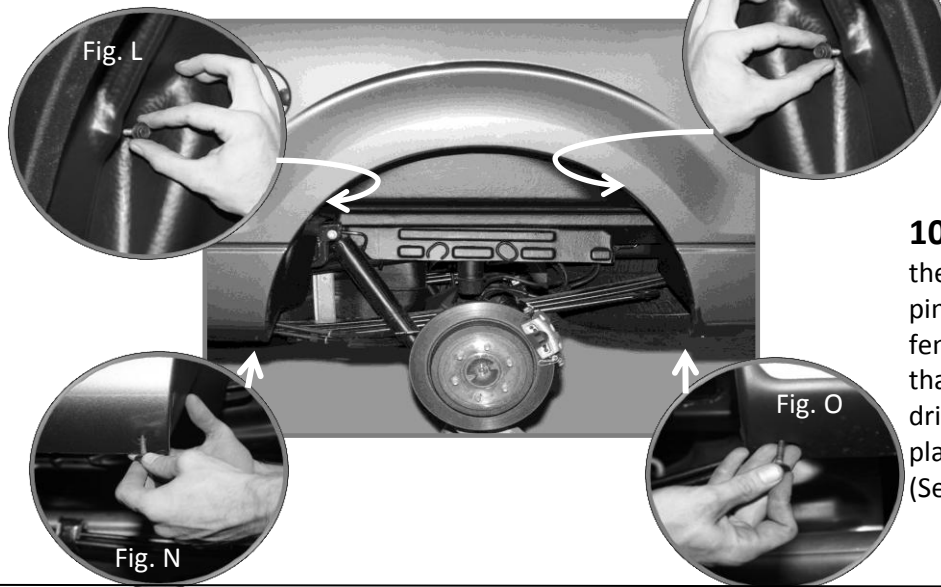
REAR WHEEL WELL INNER LINER FORD F-150

MODELS 2004 - 2005



- 7. a)** Place the Rear Wheel Well Inner Liner marked as "DS" (Driver side) inside the wheel house opening; Make sure to go up & over the shock and the mounting bracket first. (See Fig. G & H)
- b)** Insert the bottom corners behind the bottom flange of the fender. (see fig. I)
- c)** Insert the upper profile edge of the plastic liner making sure that is mounted behind the flange and around the wheel well house edge (see fig. J & K)

- 8.** Attach the plastic liner to the inner wheel house using the bolts saved in the steps 2. (See fig. L & M)



- 9.** Install one small plastic push pins through the hole that was drilled in the step 3 and the pre-drilled tab hole in the plastic protector. (See fig. N)

- 10.** Install one of the 4 plastic push pins, across the fender lower hole that and the pre-drilled hole in the plastic protector. (See fig. O)

- 11.** To install the Passenger's Side, repeat all the above steps. using the Rear Wheel Well Inner Liner marked as "PS" (Passenger side)

- 12.** Re-install the tires, making sure all the log nuts are tight.



Care and Maintenance Recommendations

To protect the appearance of this product, wash with soap and water