



INSTALLATION INSTRUCTIONS

REAR WHEEL WELL INNER LINER FORD F-150 (MODELS 2006 - CURRENT)

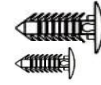
List of Contents:

Qty:

- 1 Pc. Rear Wheel Well Inner Liner, Passenger Side
- 1 Pc. Rear Wheel Well Inner Liner, Driver Side



- 1 Pc. Installation Kit
 - * 2 pc. Plastic Push Pin (Large)
 - * 4 pc. Plastic Push Pin (Small)
 - * Installation Instructions.



Required Tools:

- *Ratchet with socket of 10 mm
- *Utility Knife
- *Easy Removal Tool



Preparations:

- *Remove the tires for an easy installation
- *Clean the interior panels of the rear Wheel house

Technical Support phone line:

1-800-433-3604

Instructions:

Installation time estimated: 30 min.

1. PLEASE READ INSTRUCTIONS CAREFULLY BEFORE STARTING THE INSTALLATION.

NOTE: One person can do the installation.

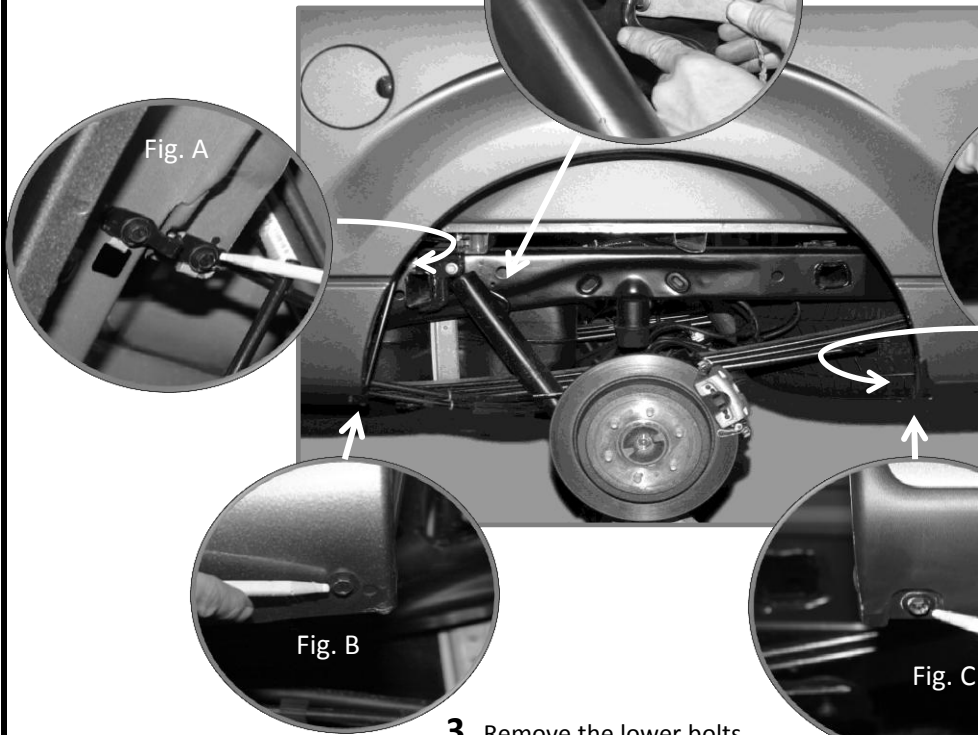
Starting on the Driver's Side:

2. Locate the top bracket support and remove the interior bolt using the wrench with 10mm socket (see fig A).

"keep the bolt in a safe place"

5. Using an easy removal tool; remove carefully the plastic push pin that holds the gas tanks exhaust hose to the chassis frame. (see fig. E) . Place the exhaust hose behind the shack to avoid interference with the installation.

Note: This Step is only applicable for models 2009 to current with gas exhaust hose.



4. Trim the excess length of the lower plastic push pin, leaving aprox. 1/8" of the length on the inside. (see fig. D).

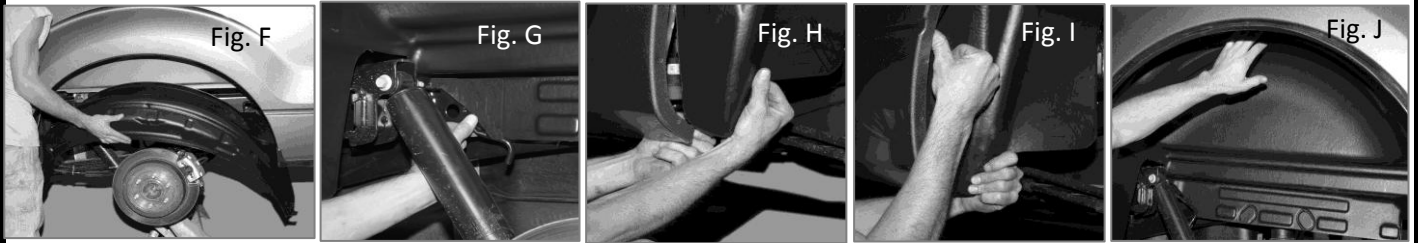
3. Remove the lower bolts, left and right (see fig. B & C). "Keep the bolts in a safe place".

NOTE: TO INSTALL THE REAR WHEEL WELL INNER LINERS ON F-150 OLDER MODELS PLEASE REFERE TO SPECIFIC ENCLOSED INSTRUCTIONS.

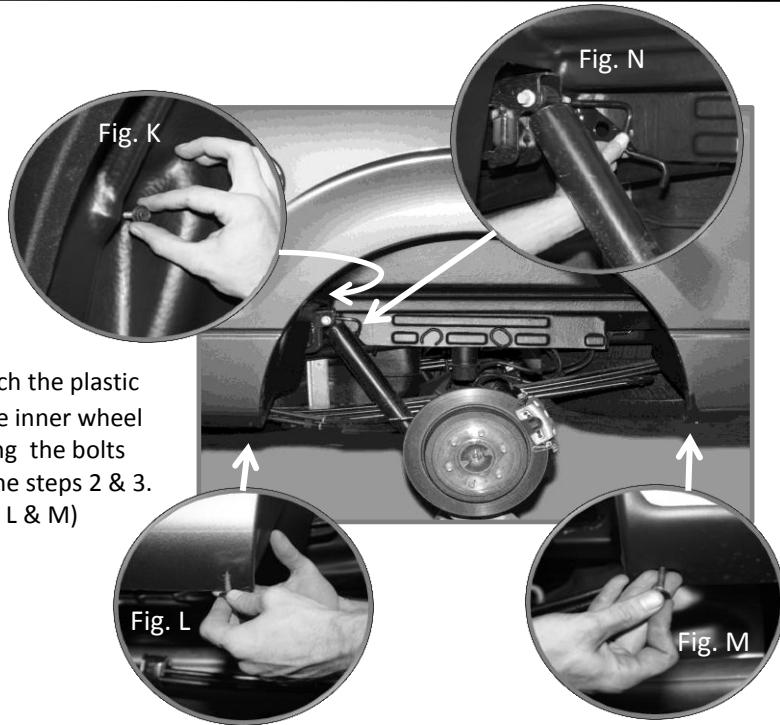


INSTALLATION INSTRUCTIONS

REAR WHEEL WELL INNER LINER FORD F-150 (MODELS 2006 - CURRENT)



- 6. a)** Place the Rear Wheel Well Inner Liner marked as "DS" (Driver side) on the inner panel of the wheel house
Make sure to go up & over the shock and shock mounting bracket first. (See Fig. F & G)
- b)** Insert the bottom corners behind the bottom flange of the fender. (see fig. H)
- c)** Insert the upper profile edge of the plastic liner making sure that is mounted behind the flange and around the wheel well house edge (see fig. I & J)



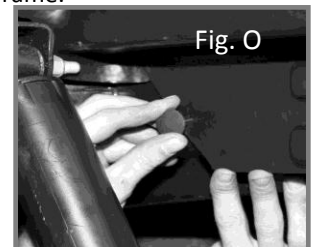
- 7.** Attach the plastic liner to the inner wheel house using the bolts saved in the steps 2 & 3. (see fig. K, L & M)

- 8.** Re-install the plastic push pin that holds the gas exhaust hose (removed from step 5).
Insert the push pin through the pre-drilled hole on the plastic protector and the hole on the chassis frame. (see fig. N)

Note: This Step is only applicable for models 2009 to current (E85 Capables).

8a. For Models without gas exhaust hose.

Insert one (Large) plastic push pin through the pre-drilled hole on the plastic protector and the hole on the chassis frame. (see fig. O)



9. To install the Passenger's Side, Repeat the steps 2, 3, 4, 6, 7 & 8a. using the Rear Wheel Well Inner Liner marked as "PS" (Passenger side)

- 10.** Re-install the tires, making sure all the lug nuts are tight.



Care and Maintenance Recommendations

To protect the appearance of this product, wash with soap and water